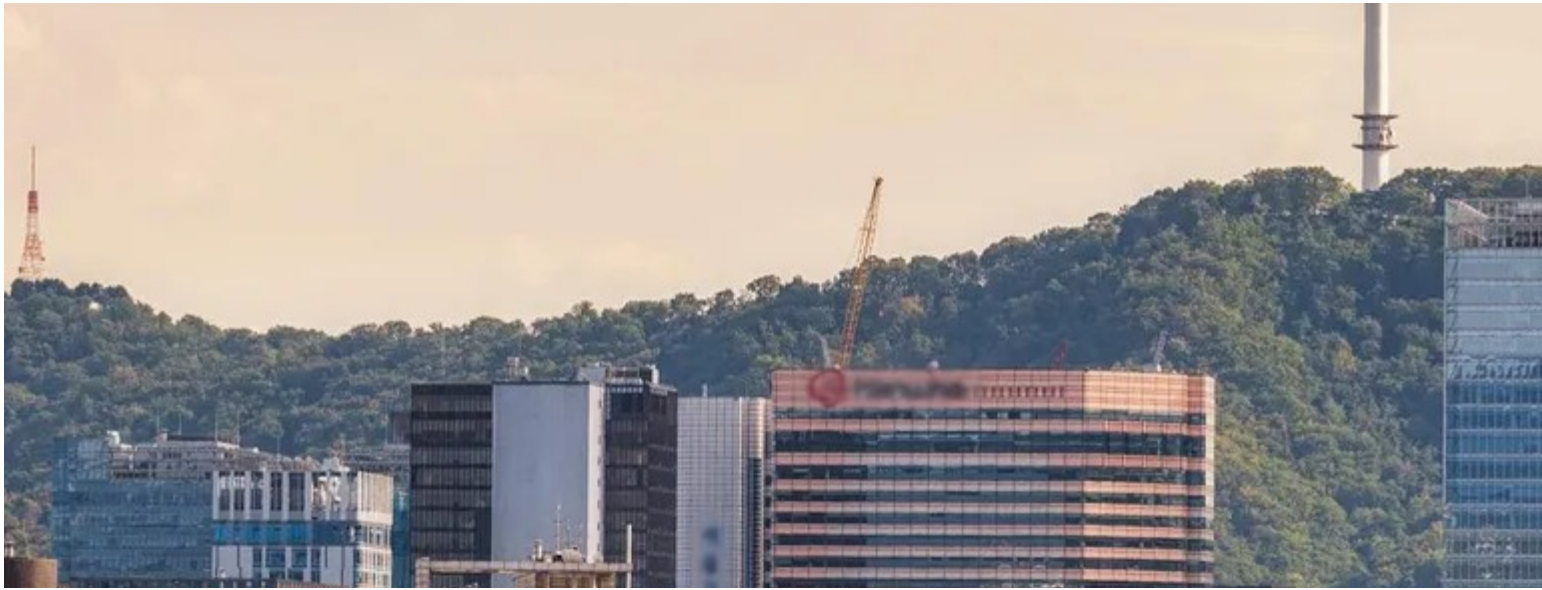


5D4N Wonderful Seoul & Busan (Muslim)

**Price per person
from
MYR 9990**



Tour Description

Embark on a journey of discovery with Sedunia Travel! Experience unique destinations, local culture, delicious cuisine, and unforgettable adventures. Our expert planners will take care of everything. Book now!

Tour Itinerary

Day 1 :- Arrive Seoul - Busan

Upon arrival at Incheon airport, meet and greet. Visit Mungyeong Drama set for photo stop. Transfer to Busan (3hrs). Continue to Gwangan bridge for night view. Upon arrival, check-in hotel. Overnight in Busan.

Lunch Dinner

Day 2 :- Busan

Breakfast at hotel. Visit to Haedong Yonggungsa Temple, Haeundae Beach and Busan Mosque. Continue to visit Nurimaru APEC house, Busan Sky Capsule Train with Sky Walk, BIFF Street & Jagalchi Fish market. Back to hotel and overnight in Busan.

Breakfast Lunch Dinner

Day 3 :- Busan - Seoul

Breakfast at hotel. Transfer to Busan KTX station and head to Seoul. Upon arrival, go to Chuncheon and visit Nami Island with ferry ride and explore famous drama "Winter Sonata" site. Transfer to hotel. Check in and overnight in Seoul.

Breakfast Lunch Dinner

Day 4 :- Seoul

After breakfast at hotel, head to Gyeongbok palace (Tuesday closed) and Itaewon Mosque. Continue tour to Namsan view point love lock photo zone and N Seoul Tower (exclude cable car & lift). Then continue to Namdaemun or Myeongdong market for shopping. Transfer back to hotel. Overnight in Seoul.

Note: Tuesday – changed to Deoksugung Palace

Breakfast Lunch Dinner

Day 5 :- Depart Seoul

After breakfast, check out and transfer to Incheon airport for your departing flights.

Breakfast

Tour Prices

Category	Travel Period	Twin	Single	-	-
Superior	January till December 2026	RM 9,990	RM 1,700		
Deluxe	January till December 2026	RM 12,270	RM 2,800		

What's included

Destination [South Korea](#)

Departure Location Seoul

Return Location Seoul

Price includes

- 4 nights hotel accommodations with daily breakfast.
- Halal / seafood meals as per itinerary
- Sightseeing and transportation as itinerary (PRIVATE BASIS)
- Train ticket (Busan – Seoul)
- Entrance fees to the museums and historical places
- English speaking driver/guide
- Basic Tipping to Drivers/Guides

Price does not include

- International air ticket
- Travel insurance
- Visa (if any)
- K-ETA
- Peak Season surcharge
- Items not mentioned

Additional Information

Tour Deal

20% OFF FOR 2ND COUPLE + VISA RM 1000 OFF

Remarks

Minimum of 2 person to go – private basis, flexible departure

Valid from January – December 2026

Peak season surcharge: April 2026

No compulsory shopping stop

Sequence of itinerary is subject to change without prior notice

Final price to be advised upon the time of booking